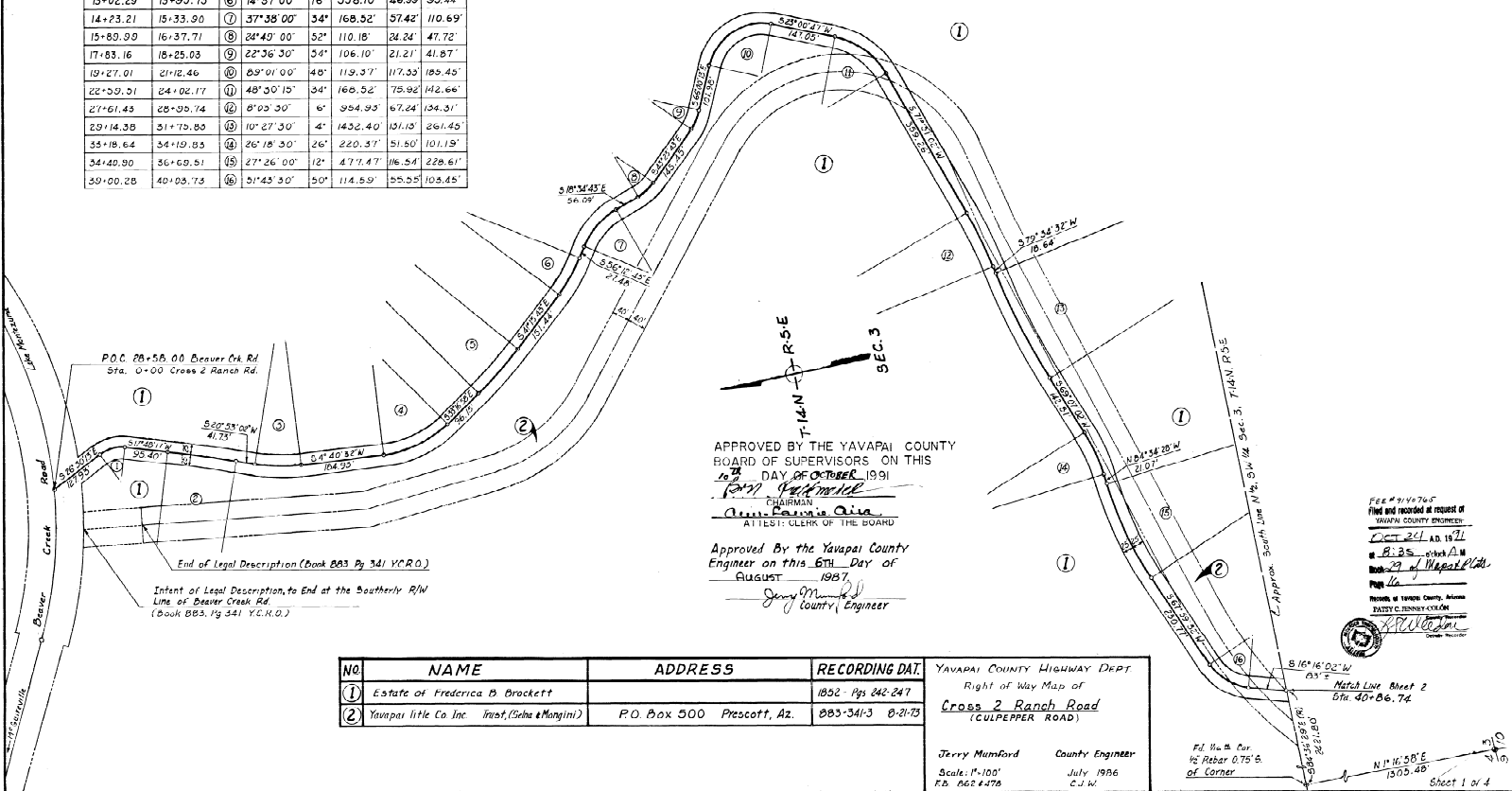


27-16

CROSS 2 RANCH ROAD
YAVAPAI COUNTY

Curve Data

PC Sta	PT Sta	Nº	Delta	D	Radius	Tang	Length
1+27.93	1+86.23	①	44°18'30"	76'	75.39'	50.70'	58.30'
2+81.63	4+55.99	②	3°04'45"	2'	2864.79'	77.0'	133.96'
4+77.32	5+78.62	③	16°12'30"	16'	358.10'	50.99'	101.30'
7+63.55	9+21.71	④	37°57'30"	24'	238.73'	82.11'	108.16'
10+17.86	11+50.85	⑤	7°58'45"	6'	954.93'	66.60'	132.99'
13+02.29	13+92.73	⑥	14°57'00"	16'	358.10'	46.99'	93.44'
14+23.21	15+33.90	⑦	37°58'00"	34'	168.52'	57.42'	110.69'
15+80.90	16+37.71	⑧	24°49'00"	52'	110.18'	24.24'	47.72'
17+83.16	18+25.03	⑨	22°36'30"	54'	106.10'	21.21'	41.87'
19+27.01	21+12.46	⑩	69°01'00"	48'	119.37'	117.33'	185.45'
22+59.51	24+02.17	⑪	48°50'15"	34'	168.52'	75.92'	112.66'
27+61.43	28+09.74	⑫	8°02'30"	6'	954.93'	67.24'	134.31'
29+14.38	31+70.80	⑬	10°27'30"	4'	1432.40'	101.13'	261.45'
33+18.64	34+19.85	⑭	26°18'30"	26'	220.37'	51.50'	101.19'
34+40.90	36+00.51	⑮	27°26'00"	12'	477.47'	16.54'	228.61'
50+00.28	40+03.73	⑯	31°43'50"	50'	114.53'	25.55'	105.45'



APPROVED BY THE YAVAPAI COUNTY BOARD OF SUPERVISORS ON THIS 10TH DAY OF OCTOBER 1991
 Jerry Mumford, Chairman
 Attest: Clerk of the Board
 Approved By the Yavapai County Engineer on this 6TH Day of August 1987
 Jerry Mumford, County Engineer

FILED IN VARIOUS FILES AND RECORDED IN RECORDS OF YAVAPAI COUNTY ENGINEER
 OCT 24 AD 1991
 B. B. B. CIVIL ENGR
 BOOK 29 OF MAPS & PLATS
 PAGE 16
 RECORDS OF YAVAPAI COUNTY, ARIZONA
 PATRY C. TERRY, CLERK
 October 24, 1991

Nº	NAME	ADDRESS	RECORDING DAT.
①	Estate of Frederica B Brackett		1852 - Pgs 240, 247
②	Yavapai title Co Inc Trust (Saba & Mangini)	P.O. Box 500 Prescott, Az.	883-341-3 8-21-73

YAVAPAI COUNTY HIGHWAY DEPT
 Right of Way Map of
Cross 2 Ranch Road
 (CULPEPPER ROAD)

Jerry Mumford County Engineer
 Scale: 1"=100'
 P.S. 662-4-78 July 1986
 C.J.W.

Match Line Sheet 2
 5th 40+86.74
 N 1°16'58"E
 1505.48'
 Sheet 1 of 4