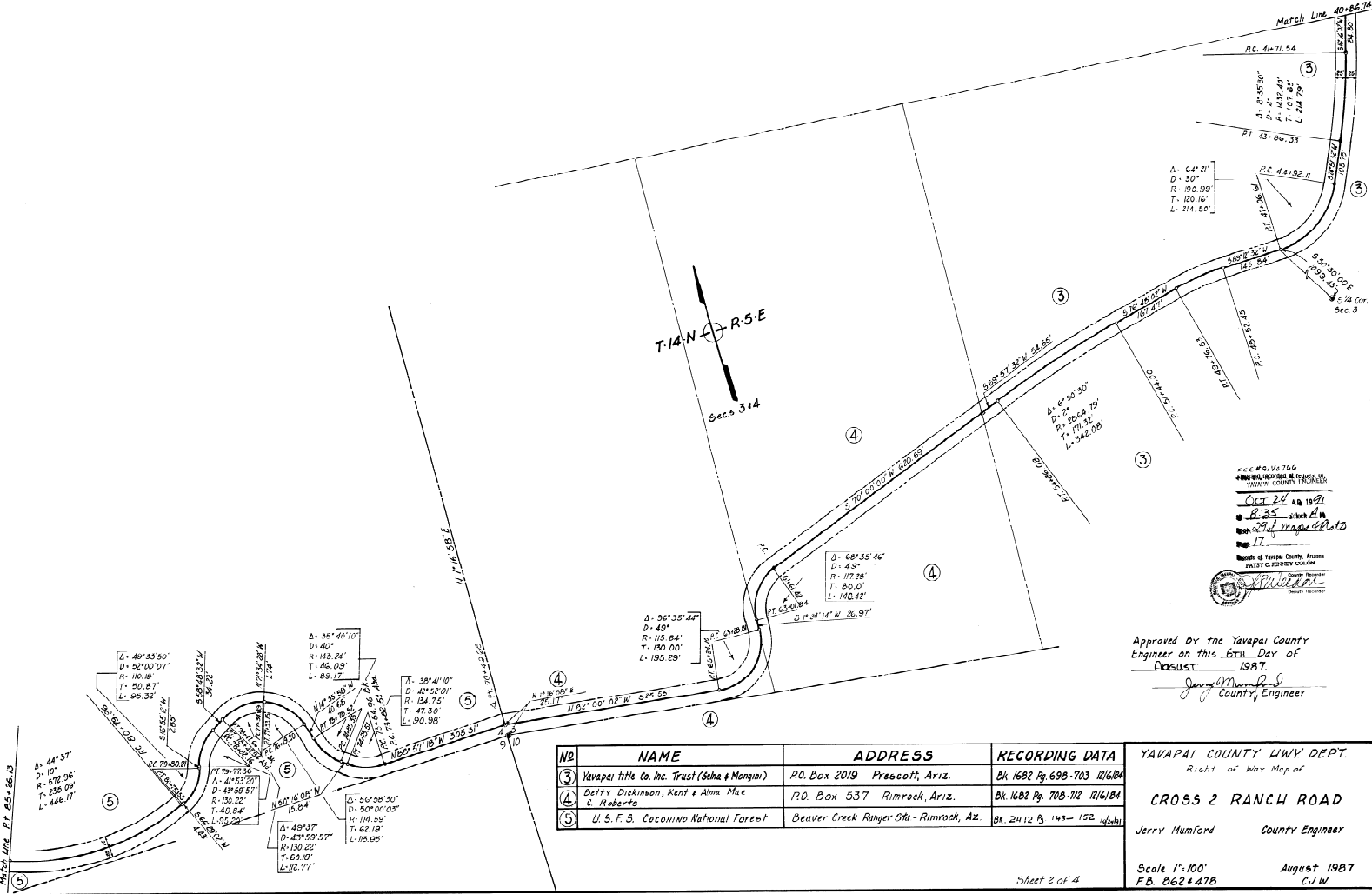


CROSS 2 RANCH ROAD
YAVAPAI COUNTY

29-17



APPROVED BY THE BOARD OF SUPERVISORS
YAVAPAI COUNTY ENGINEER
OCT 24 1987
JERRY MUMFORD
County Engineer

Approved by the Yavapai County
Engineer on this 6th Day of
August 1987.
Jerry Mumford
County Engineer

NO	NAME	ADDRESS	RECORDING DATA
③	Yavapai title Co. Inc. Trust (Saha & Mangini)	P.O. Box 2019 Prescott, Ariz.	Bk. 1682 Pg. 695-703 12/16/84
④	Betty Dickinson, Kent & Alma Mae & Roberts	P.O. Box 537 Rimrock, Ariz.	Bk. 1682 Pg. 708-712 12/16/84
⑤	U.S.F.S. Coconino National Forest	Beaver Creek Ranger Sta - Rimrock, Az.	Bk. 2u12 Pg. 147-152 1/24/81

YAVAPAI COUNTY HWY DEPT.
Right of Way Map of
CROSS 2 RANCH ROAD
Jerry Mumford Country Engineer
Scale 1"=100' August 1987
F.B. 0624.47B C.I.W.