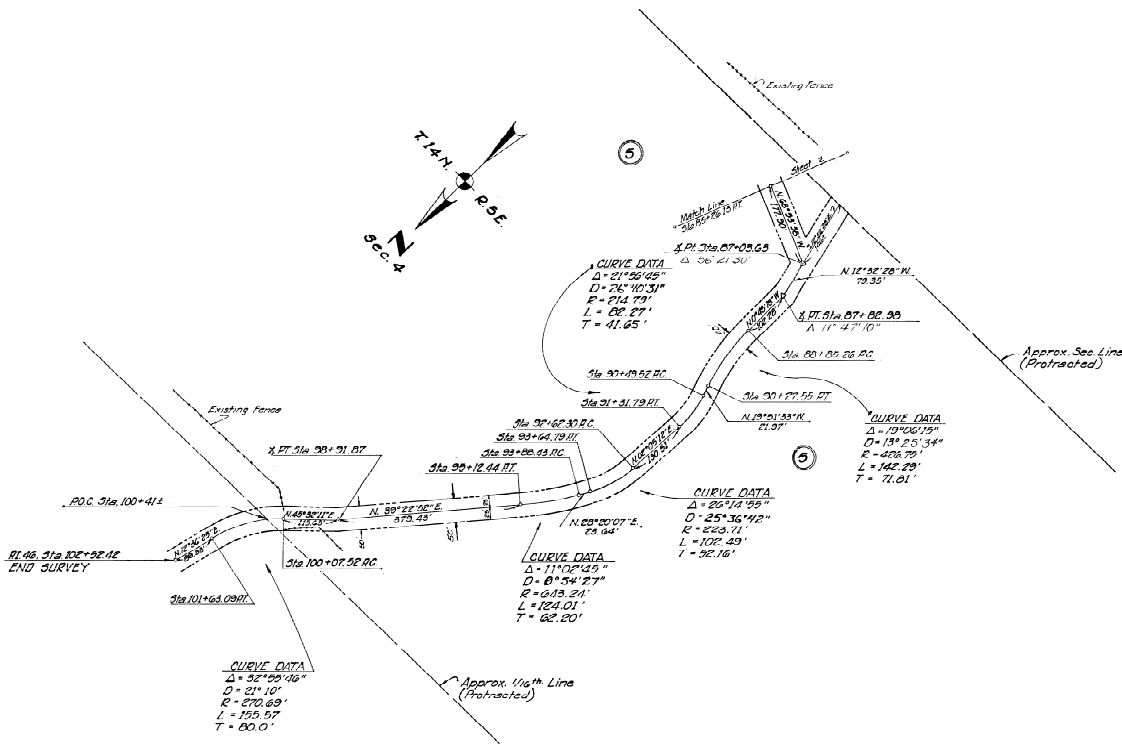


CROSS 2 RANCH ROAD
YAVAPAI COUNTY

29-18



RECORDED DEPT. OF
YAVAPAI COUNTY ENGINEER
BOOK 24, P. 18, 19, 20
DATE 12-25-1987
MAP 27 J 11/24/87
Scale 1/4
YAVAPAI COUNTY, ARIZONA
JERRY MUMFORD
COUNTY ENGINEER

Approved by the Yavapai County
Engineer on this 15TH Day of
February 1987.
Jerry Mumford
County Engineer

NO	NAME	ADDRESS	Recorded - Date
5	U.S.F.S. - Coconino National Forest	Beaver Creek Ranger Sta., Rimrock, Az.	RECORDED 12/25/87

Revised 9/89 A.L.A.
YAVAPAI COUNTY HIGHWAY DEPT.
Right of Way Map of
Cross 2 Ranch Road
(CULPEPPER ROAD)
Jerry Mumford County Engineer
Scale 1"=100'
12, 802 & 219 March 88
372