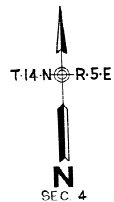
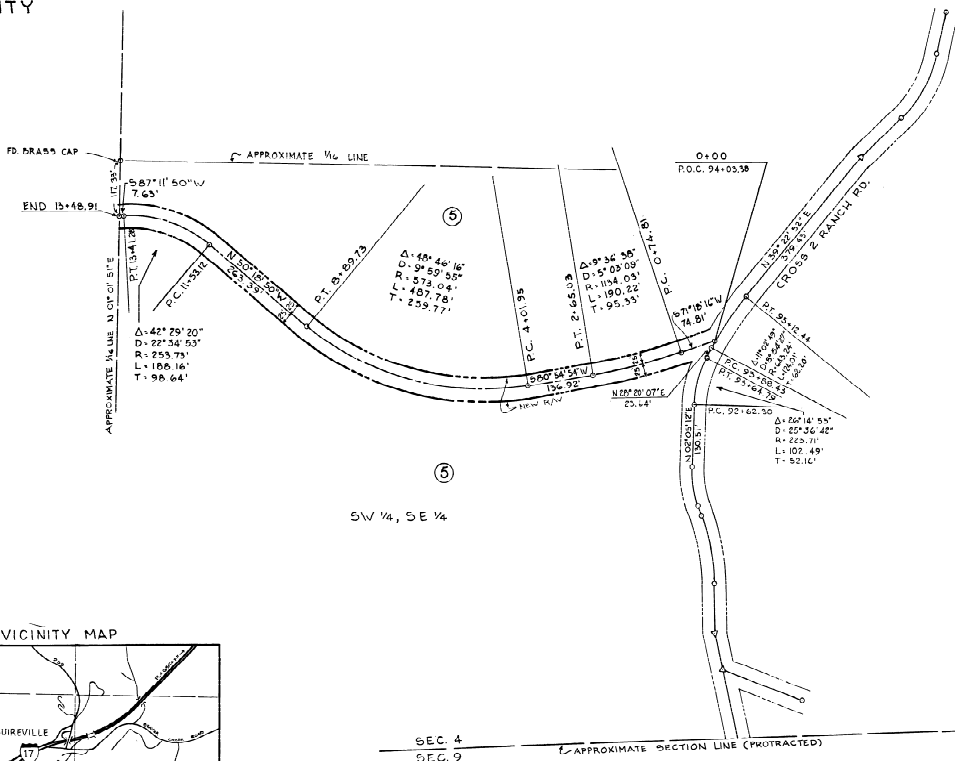


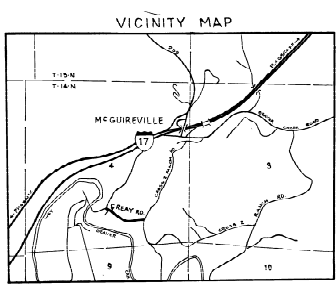
27-17

REAY ROAD  
YAVAPAI COUNTY



SE 1/4, SW 1/4

SW 1/4, SE 1/4



Field Notes  
FILED AND RECORDED AT REQUEST OF  
YAVAPAI COUNTY ENGINEER  
OCT 24 - AD 19 26  
P. 35 - BOOK 214  
Book of Maps - Plate  
Map 17  
March of Terrell County, Arizona  
DUSTY C. BERRY-COLEMAN  
County Engineer

Approved by the Yavapai County  
Engineer on this 5th Day of  
AUGUST 1987.  
Jerry Mumford  
County Engineer

NO	NAME	ADDRESS	RECORDING DATA
(5)	U.S.F.S. - COCONINO NATIONAL FOREST	BEAVER CREEK RANGER STA. - RIMROCK, AZ.	BK. 2472 P. 143-152 11/24/71

YAVAPAI COUNTY HWY DEPT.  
RIGHT OF WAY MAP OF  
REAY ROAD  
Jerry Mumford COUNTY ENGINEER  
SCALE 1"=100'  
F.D. 476  
SEPT 85  
CJW